
TECHNICAL MANUAL

**ORGANIZATIONAL, DIRECT SUPPORT, AND GENERAL SUPPORT
MAINTENANCE REPAIR PARTS AND SPECIAL TOOLS LIST
(INCLUDING DEPOT MAINTENANCE REPAIR PARTS AND SPECIAL TOOLS)
FOR**

**DIPLEXER-FILTER GROUP
OA-6985/MRC-85(V)**

**HEADQUARTERS, DEPARTMENT OF THE ARMY
30 July 1976**

TECHNICAL MANUAL }
NO. 11-5820-746-24P }

**HEADQUARTERS
DEPARTMENT OF THE ARMY
WASHINGTON, DC, 30 July 1976**

**Organizational, Direct Support, And General Support
Maintenance Repair Parts And Special Tools List
(Including Depot Maintenance Repair Parts and Special Tools)
FOR
DIPLEXER-FILTER GROUP OA-6985/MRC-85(V)**

Current as of 14 April 1976

REPORTING OF ERRORS

You can improve this manual by recommending improvement using DA Form 2028-2 (Test) located in the back of the manual. Simply tear out the self addressed form fill it out as shown on the sample, fold it where shown, and drop it in the mail,

If there are no blank DA Form 2028-2 (Test) in the back of your manual, use the standard DA Form 2028 (Recommended **Changes** to Publications and Blank Forms) and forward to the Commander, US Army Electronics Command, ATTN DRSEL-MA-Q, Fort Monmouth, New Jersey 07703.

In either case a reply will be furnished direct to you.

Table of Contents

	Page	Illus Figure
Section I Introduction	1	
II. Repair parts list	5	
Group 00 Diplexer-Filter Group OA-6985/MRC-85(V)	5	1
01 Diplexer CU-1376/MRC-85(V)	7	2
0101 Probe Assembly, Adjustable	9	3
0102 Transitron Assembly (32249G1)	11	4
0103 Transitron Assembly (32117G1)	13	5
0104 Tuning Stub Assembly for CU-1376/MRC-85(V)	15	6
0105 Crank Assembly	17	7
02 Filter, Band Pass F-903/MRC-85(V)	19	8
0201 Transitron Assembly (See Group 0103)		
0202 Tuning Stub Assembly for F-903MRC-85(V)	21	9
0203 Filter Assembly	23	10
03 Hanger Assembly	25	11
Section III. Special Tools List (Not applicable) ...		
IV National stock number and part number index	26	

***This manual supersedes so much of TM 11-5820-746-15, 29 April 1969, as pertains to repair parts and special tools list.**

SECTION I

INTRODUCTION

1. Scope

This manual lists repair parts and special tools required for performance of direct support maintenance of the OA-6985/MAC-85(V).

2. General

This Repair Parts and Special Tools List is divided into the following sections:

a. *Section II. Repair Parts List.* A list of repair parts authorized for use in the performance of maintenance. The list also includes parts which must be removed for replacement of the authorized parts. Parts lists are composed of functional groups in ascending numerical sequence, with the parts in each group listed in figure and item number sequence.

b. *Section III. Special Tools List.* Not applicable.

c. *Section IV. National Stock Number and Part Number Index.* A list, in ascending National item identification number (NIIN, last 9 digits) sequence, of all National stock numbers appearing in the listings, followed by a list, in alphameric sequence, of all part numbers appearing in the listings. National stock number and part numbers are cross-referenced to each illustration figure and item number appearance.

3. Explanation of Columns

The following provides an explanation of columns found in the tabular listings:

a. *Illustration.* This column is divided as follows:

(1) *Figure number.* Indicates the figure number of the illustration in which the item is shown.

(2) *Item number.* The number used to identify each item c&d out in the illustration.

b. *Same, Maintenance, and Recoverability Codes (SMR).*

(1) *Source code.* Source codes are assigned to support items to indicate the manner of acquiring support items for maintenance, repair, or overhaul of end items. Source codes are entered in the first and second positions of the Uniform SMR Code format as follows:

	Definition
--	------------

PA- Item procured and stocked for anticipated or known usage.

XD- A *support* item that is not stocked. When required, item will be procured through normal supply channels.

NOTE

Cannibalization or salvage may be used as a source of supply for any items source coded above except those coded XA, XD, and air-

craft support items as restricted by AR 700-42.

(2) *Maintenance code.* Maintenance codes are assigned to indicate the levels of maintenance authorized to USE and REPAIR support items. The maintenance codes are entered in the third and fourth positions of the Uniform SMR Code format as follows:

(a) The maintenance code entered in the third position will indicate the lowest maintenance level authorized to remove, replace, and use the support item. The maintenance code entered in the third position will indicate one of the following levels of maintenance:

C o d e	<i>Application/Explanation</i>
F-	Support item is removed, replaced, used at the direct support level.

(b) The maintenance code entered in the fourth position indicates whether the item is to be repaired and identifies the lowest maintenance level with the capability to perform complete repair (i.e., all authorized maintenance functions). This position will contain one of the following maintenance codes:

C o d e	<i>Application/Explanation</i>
F-	The lowest maintenance level capable of complete repair of the support item is the direct support level.
Z-	Nonreparable. No repair is authorized.

(3) *Recoverability code.* Recoverability codes are assigned to support items to indicate the disposition action on unserviceable items. The recoverability code is entered in the fifth position of the uniform SMR Code format as follows:

<i>Recoverability codes</i>	<i>Definition</i>
Z-	Nonreparable item. When unserviceable, condemn and dispose at the level indicated in position 3.
F-	Repairable item. When uneconomically repairable, condemn and dispose at the direct support level.

c. *National Stock Number.* Indicates the National stock number assigned to the item and will be used for requisitioning purposes.

d. *Part Number.* Indicates the primary number used by the manufacturer (individual, company, firm, corporation, or Government activity), which controls the design and *characteristics* of the item by means of its engineering drawings, specifications standards, and inspection requirements, to identify an item or range of items.

NOTE

When a stock numbered item is requisitioned, the repair part received may have a different part number than the part being replaced.

e. Federal Supply Code for Manufacturer (FSCM). The FSCM is a 5-digit numeric code listed in SB 708-42 which is used to identify the manufacturer, distributor, or Government agency, etc.

f. Description. indicates the Federal item name and, if required, a minimum description to identify the item.

g. Unit of Measure (U/M). Indicates the standard of the basic quantity of the listed item as used in performing the actual maintenance function. This measure is expressed by a two-character alphabetical abbreviation (e.g., ea, in, pr, etc.). When the unit of measure differs from the unit of issue, the lowest unit of issue that will satisfy the required units of measure will be requisitioned.

h. Quantity Incorporated in Unit. Indicates the quantity of the item used in the breakout shown on the illustration figure, which is prepared for a functional group, subfunctional group, or an assembly.

4. Special Information

The following publications pertain to the OA-6985/MRC-85(V) and its components:
TM 11-5820-746-15, Diplexer-Filter Group
OA-6985/MRC-85(V) (Antenna Systems, Inc. 42537G1)

5. How to Locate Repair Parts

a. When National stock number or part number is unknown.

(1) *First.* Using the table of contents, determine the functional group within which the repair part belongs. This is necessary since illustrations are prepared for functional group and listings are divided in to the same groups.

(2) *Second.* Find the illustration covering the functional group to which the repair part belongs.

(3) *Third.* Identify the repair part on the illustration and note the illustration figure and item number of the repair part.

(4) *Fourth.* Using the Repair Parts Listing, find the figure and item number noted on the illustration.

b. When National stock number or part number is known.

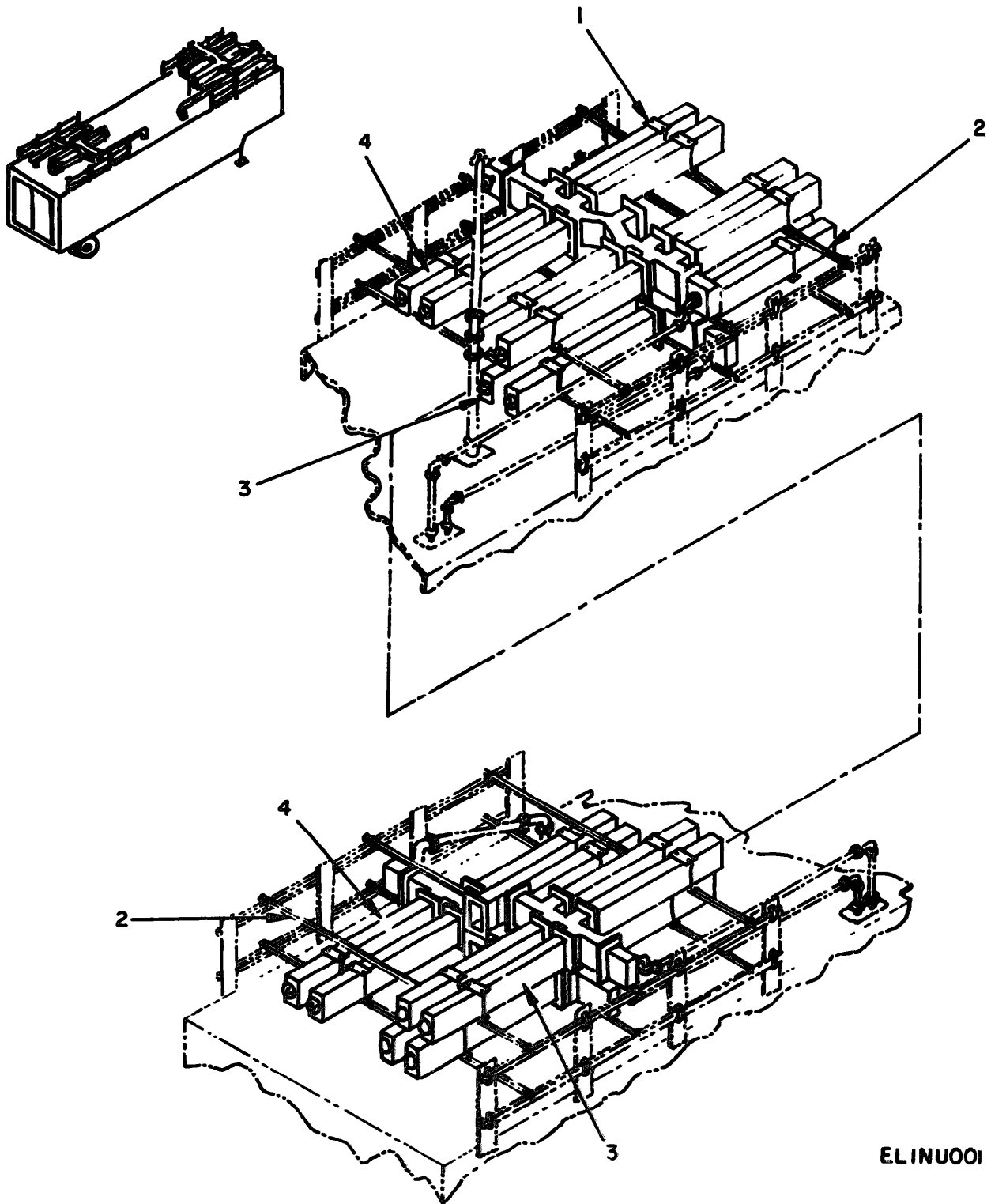
(1) *First.* Using the Index of National Stock Numbers and part Numbers, find the pertinent National stock number or part number. This index is in ascending NIIN sequence followed by a list of part numbers in ascending alphameric sequence, cross-referenced to the illustration figure number and item number.

(2) *Second.* After finding the figure and item number, locate the figure and item number in the repair parts list.

6. Abbreviations

Not applicable.

(Next printed page is 4)



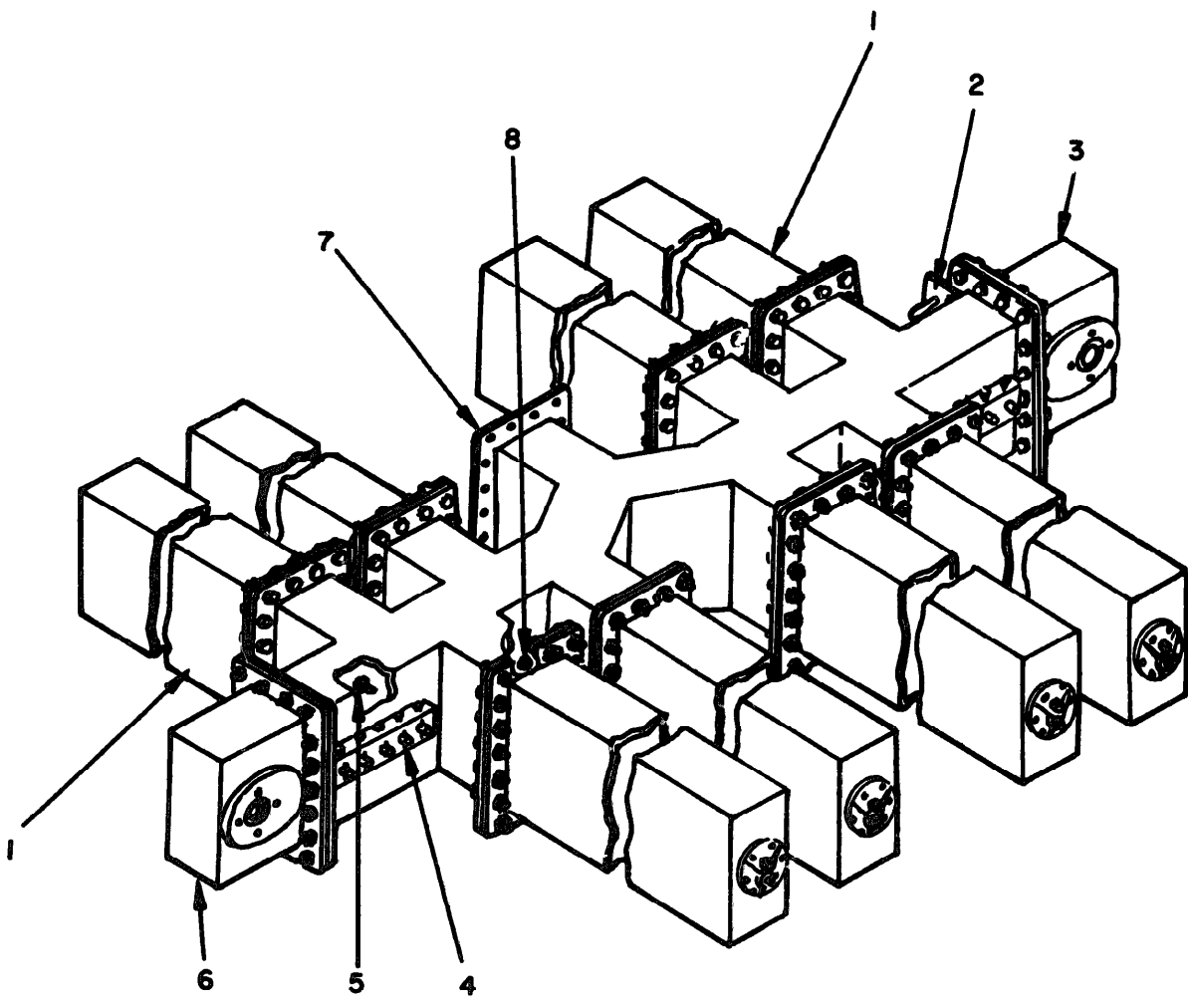
ELINU001

Figure 1. Diplexer-Filter Group OA-6985/MRC-85(V).

SECTION II

TM 11-5820-746-24P

(1) ILLUSTRATION		(2)	(3)	(4)	(5)	(6)	(7)	(8)
(a) FIG NO.	(b) ITEM NO.	SMR CODE	NATIONAL STOCK NUMBER	PART NUMBER	PSCN	DESCRIPTION USABLE ON CODE	U/M	QTY INC IN UNIT
						GROUP 00 DIPLEXER-FILTER GROUP OA-6985/MRC-85(V)		
1	1	XDFFF	22511G1		11128	HANGER ASSEMBLY	EA	24
1	2	XDFZZ	P5500		96195	ALUMINUM CHANNEL	EA	12
1	3	XDFFF	F903MRC85V		80058	FILTER, BAND PASS	EA	2
1	4	XDFFF	CU1376MRC85V		80058	DIPLEXER	EA	2



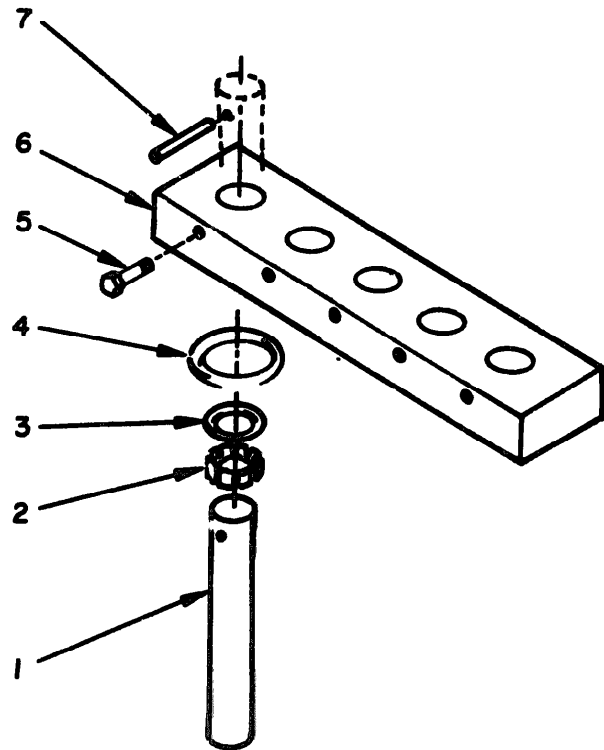
ELINU002

Figure 2. Diplexer CU-1376/MRC-85(V).

SECTION II

TM 11-5820-746-24P

(1) ILLUSTRATION		(2)	(3)	(4)	(5)	(6)	(7)	(8)
(a) FIG NO.	(b) ITEM NO.	SMR CODE	NATIONAL STOCK NUMBER	PART NUMBER	P8CM	DESCRIPTION	USABLE ON CODE	QTY INC IN UNIT
GROUP 01 CU-1376/MRC-85(V)								
2	1	PAFFF	5820-00-946-3055	42496G1	11128	TUNING STUB ASSEMBLY		EA 16
2	2	XDFFF		22518G1	11128	CRANK ASSEMBLY		EA 2
2	3	XDFFF		32249G1	11128	TRANSITION ASSEMBLY		EA 2
2	4	XDFFF		32486G1	11128	PROBE ASSEMBLY, ADJUSTABLE		EA 2
2	5	PAFZZ	5305-00-576-5810	NS35233-61	96906	SCREW		EA 30
2	6	XDFFF		32117G1	11128	TRANSITION ASSEMBLY		EA 2
2	7	XDFZZ		42476G1	11128	DIPLEXER BODY		EA 2
2	8	XDZZZ		TYPES 0-328Y5-8 IN CHES	11128	SCREW, MACHINE		EA 12



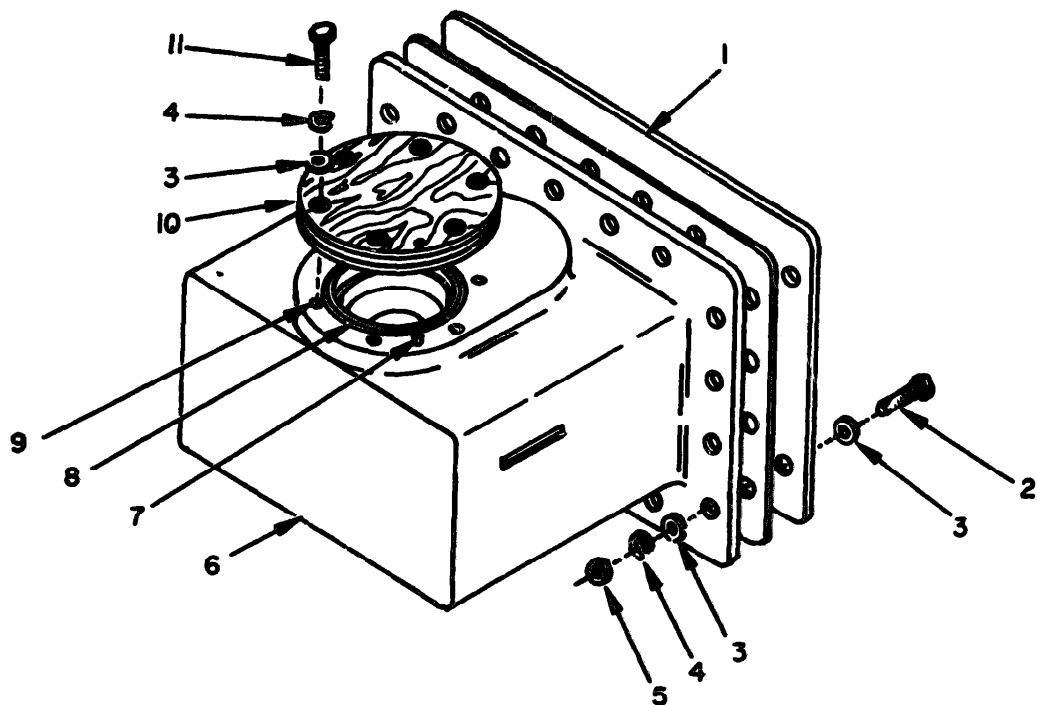
JNU003

Figure 3. Probe Assembly, Adjustable.

SECTION II

TM 11-5820-746-24P

(1) ILLUSTRATION		(2)	(3)	(4)	(5)	(6) DESCRIPTION	(7)	(8)
(a) FIG NO.	(b) ITEM NO.	SMR CODE	NATIONAL STOCK NUMBER	PART NUMBER	PCNM	USABLE ON CODE	U/M	QTY INC IN UNIT
						GROUP 0101 PROBE ASSEMBLY, ADJUSTABLE		
3	1	XDFZZ		22493-1	11128	PROBE	EA	10
3	2	XDFZZ		97-72A	30817	RING, CONTACT	EA	17
3	3	PAFZZ	5330-00-250-0221	NS 29513-210	96906	PACKING	EA	17
3	4	XDFZZ		12494-1	11128	GASKET	EA	2
3	5	PAFZZ	5305-00-271-8814	101	02751	SCREW, CAP, HEXAGON HEAD	EA	17
3	6	XDFZZ		42485-1	11128	BLOCK, ADJUSTABLE PROBE	EA	2
3	7	XDFZZ		5-2-040-187-1625	72962	PIN, STRAIGHT, HEADLESS	EA	17



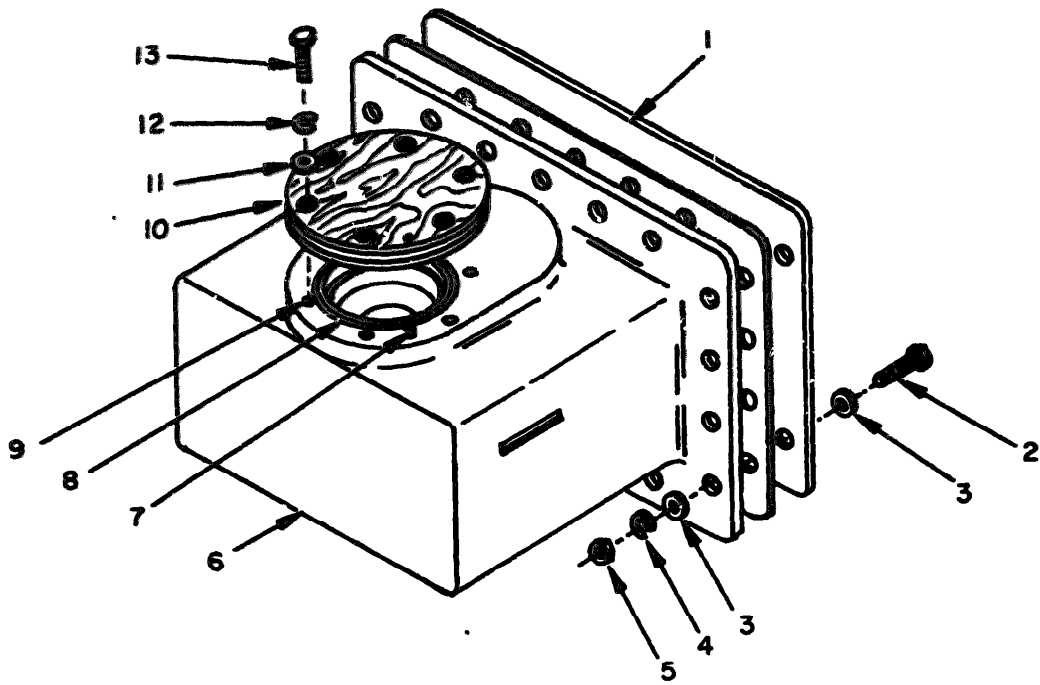
ELINU004

Figure 4. Transitron Assembly (32249G1).

SECTION II

TM 11-5820-746-24P

(1) ILLUSTRATION		(2)	(3)	(4)	(5)	(6)	(7)	(8)
(a) FIG NO.	(b) ITEM NO.	SMR CODE	NATIONAL STOCK NUMBER	PART NUMBER	PCOM	DESCRIPTION USABLE ON CODE	U/M	QTY INC IN UNIT
						GROUP 0102 TRANSITRON ASSEMBLIES <i>Pls 3 379 21</i>		
4	1	XDFZZ		32004-5	11128	COVER, WAVEGUIDE FLANGE	EA	2
4	2	PAFZZ	5305-00-021-3740	MS35307-64	96906	SCREW	EA	204
4	3	PAFZZ	5310-00-543-2870	MS15795-314	96906	WASHER	EA	410
4	4	PAFZZ	5310-00-275-0586	MS35338-84	96906	WASHER	EA	206
4	5	PAFZZ	5310-00-655-6457	MS35690-610	96906	NUT	EA	204
4	6	XDFZZ		32249G2	11128	TRANSITION WELDMENT	EA	1
4	7	PAFZZ	5315-00-682-1733	MS16555-646	96906	PIN	EA	1
4	8	PAFZZ	5330-00-251-9368	MS29513-337	96906	PACKING	EA	1
4	9	PAFZZ	5340-00-325-0580	SR376	89324	INSERT	EA	6
4	10	XDFZZ		22085-3	11128	COVER, WAVEGUIDE FLANGE	EA	1
4	11	PAFZZ	5305-00-021-3732	MS35307-61	96906	SCREW	EA	6



ELINU005

Figure 5. Transatron Assembly (32117G1).

SECTION II

TM 11-5820-746-24P

(7) ILLUSTRATION		(8)	(9)	(10)	(11)	(12) DESCRIPTION	(13) USABLE QTN CODE	(14)	(15)
(16) QTY REQ	(17) ITEM NR.	(18) QMR CODE	(19) NATIONAL STOCK NUMBER	(20) PART NUMBER	(21) FSDN			(22) UNIT	(23) QTY IN UNIT
						GROUP 0103 TRANSITRON ASSEMBLY			
5	1	XDFZZ		32004-5	11120	COVER, WAVEGUIDE FLANGE		EA	1
5	2	PAFZZ	5305-00-821-3710	MS35307-64	96906	SCREW		EA	400
5	3	PAFZZ	5310-00-543-2370	MS15795-314	96906	WASHER		EA	820
5	4	PAFZZ	5310-00-275-0586	MS35310-84	96906	WASHER		EA	412
5	5	PAFZZ	5310-00-655-6457	MS35400-610	96906	NUT		EA	400
5	6	XDFZZ		3211763	11120	WELDMENT, TRANSITION		EA	1
5	7	PAFZZ	5315-00-825-1207	MS16575-127	96906	PIN		EA	1
5	8	PAFZZ	5330-0-291-7339	MS29513-320	96906	PACKING		EA	1
5	9	PAFZZ	5340-00-189-8716	SR310	83324	INSERT		EA	4
5	10	XDFZZ		22005-2	11120	COVER, WAVEGUIDE FLANGE		EA	1
5	11	PAFZZ	5310-00-625-5756	MS15795-312	96906	WASHER		EA	16
5	12	PAFZZ	5310-00-042-6759	MS35336-83	96906	WASHER		EA	4
5	13	PAFZZ	5306-000-543-4405	MS35307-34	96906	SCREW		EA	4

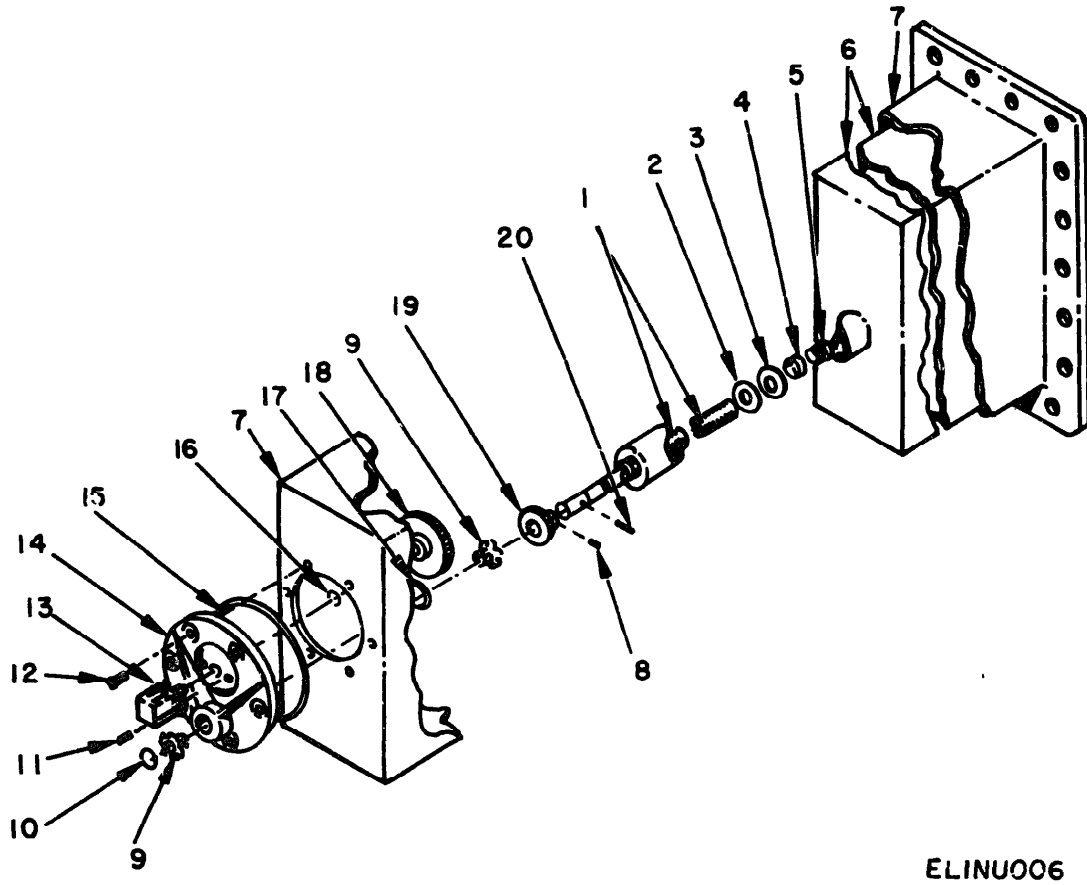
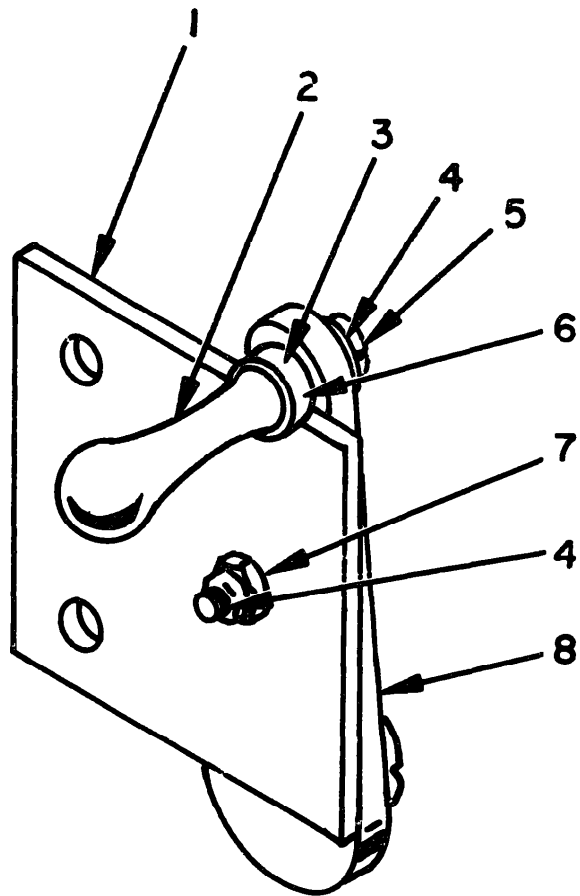


Figure 6. Tuning Stub Assembly for CU-1376/MRC-85(V).

SECTION II

TM 11-5820-746-24P

(1) ILLUSTRATION		(2)	(3)	(4)	(5)	(6) DESCRIPTION	(7)	(8)
(a) FIG NO.	(b) ITEM NO.	SNR CODE	NATIONAL STOCK NUMBER	PART NUMBER	PSCN	USABLE ON CODE	U/M	QTY INC IN UNIT
GROUP 0104 TUNING STUB ASSEMBLY								
6	1	XDFZZ	5310-00-616-3023	22271-1	11128	SHAFT, SHOULDERED	EA	8
6	2	XDFZZ		5-16 INCHES OD	11128	WASHER, NONMETALLIC	EA	8
6	3	PAFZZ		MS15795-212	96906	WASHER	EA	8
6	4	XDFZZ		42270-23	11128	TUBE, ALUMINUM ALLOY	EA	3
6	5	XDFZZ		MS35291-27	96906	SCREW	EA	8
6	6	XDFZZ		32254G5	11128	PLUNGER ASSEMBLY, DOUBLE	EA	8
6	7	XDFZZ		22269G1	11128	STUD BODY, TUNING	EA	8
6	8	XDFZZ		5-30BY1-4 INCHES	11128	SETSCREW	EA	8
6	9	XDFZZ		6L6F	96881	NYLINER	EA	16
6	10	PAFZZ	5365-00-282-7120	5100-37H	79136	RING, RETAINING	EA	40
6	11	XDFZZ	5365-00-282-7120	5-40BY1-4 INCHES	11128	SETSCREW	EA	13
6	12	XDFZZ		TYPES 8-32BY3-8 INCHES	11128	SCREW, MACHINE	EA	56
6	13	XDFZZ	6680-00-225-6973	D114114	62869	COUNTER, ROTARY, FIXED MOUNTING	EA	8
6	14	XDFZZ	5330-00-585-3353	32293-1	11128	CASTING	EA	8
6	15	PAFZZ		MS29513-347	96906	PACKING	EA	8
6	16	PAFZZ		5330-00-252-6048	MS29513-6	96906	PACKING	EA
6	17	PAFZZ	5330-00-248-3831	MS29513-11	96906	PACKING	EA	8
6	18	XDFZZ	3020-00-269-3419	G62-96	00141	GEAR, SPUR	EA	8
6	19	XDFZZ		Y4848	71041	GEAR, SPUR	EA	8
6	20	PAFZZ	5315-00-841-4442	79-028-125-0750	72962	PIN, SPRING	EA	8



ELINU007

Figure 7. Crank Assembly.

SECTION II

TM 11-5820-746-24P

(1) ILLUSTRATION		(2)	(3)	(4)	(5)	(6)	(7)	(8)
(a) PWB NO.	(b) ITEM NO.	SMR CODE	NATIONAL STOCK NUMBER	PART NUMBER	FSCM	DESCRIPTION	USABLE ON CODE	QTY INC IN UNIT
						GROUP 0105 CRANK ASSEMBLY		
7	1	XDFZZ		22516-1	11120	BRACKET,CRANK	EA	1
7	2	XDFZZ		12517-1	11120	HANDLE,CRANK	EA	1
7	3	XDFZZ		22515G1	11120	CRANK,HAND	EA	1
7	4	PAFZZ	5305-00-543-2713	MS35233-64	96906	SCREW	EA	2
7	5	PAFZZ	5310-00-619-1148	MS15795-308	96906	WASHER	EA	1
7	6	PAFZZ	5310-00-054-1831	MS35338-81	96906	WASHER	EA	1
7	7	PAFZZ	5310-00-262-6355	79NM04	72962	NUT,SELF LOCKING,HEXAGON	EA	1
7	8	XDFZZ		32514-1	11120	CASTING,CRANK	EA	1

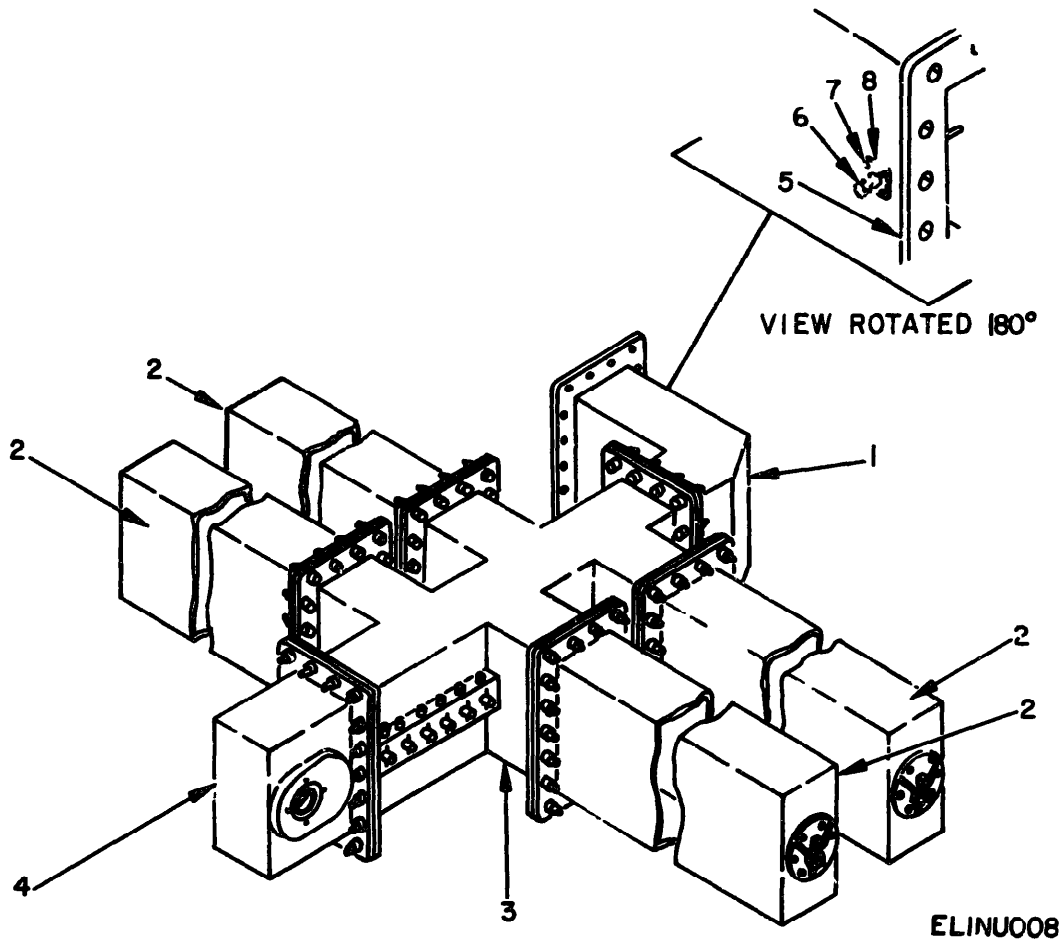
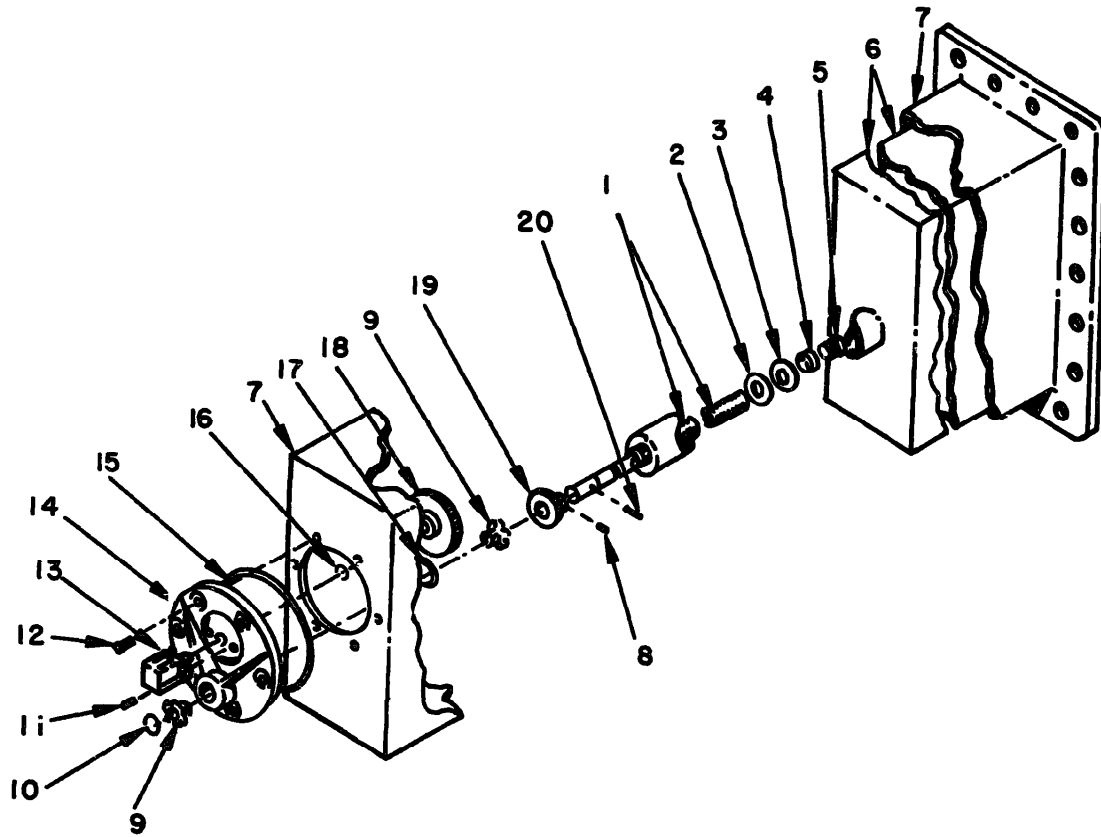


Figure 8. Filter, Band Pass F-903/MRC-85(V).

(1) ILLUSTRATION		(2)	(3)	(4)	(5)	(6)	(7)	(8)
(a) FIG NO.	(b) ITEM NO.	QMR CODE	NATIONAL STOCK NUMBER	PART NUMBER	PCOM	DESCRIPTION	USABLE ON CODE	QTY INC IN UNIT
						GROUP 02 FILTER, BAND PASS F-903/MRC-85(V)		
8	1	XDFZZ		2252161	11120	BEND ASSEMBLY, E PLANE	EA	2
8	2	XDFFF		4227061	11120	TUNING STUB ASSEMBLY	EA	8
8	3	XDFZ7		4220161	11120	FILTER ASSEMBLY	EA	2
8	4	XDFFF		3211761	11120	TRANSITION ASSEMBLY	EA	2
8	5	XDFZZ		4243162	11120	WAVEGUIDE ASSEMBLY, E PLANE	EA	2
8	6	XDFZZ		KNT4-01	91030	CONNECTOR, RECEPTACLE, ELECTRICAL	EA	4
8	7	PAFZZ	5305-00-208-4861	MS35233-27	96906	SCREW	EA	16
8	8	XDFZZ		12520-1	11120	GASKET	EA	4



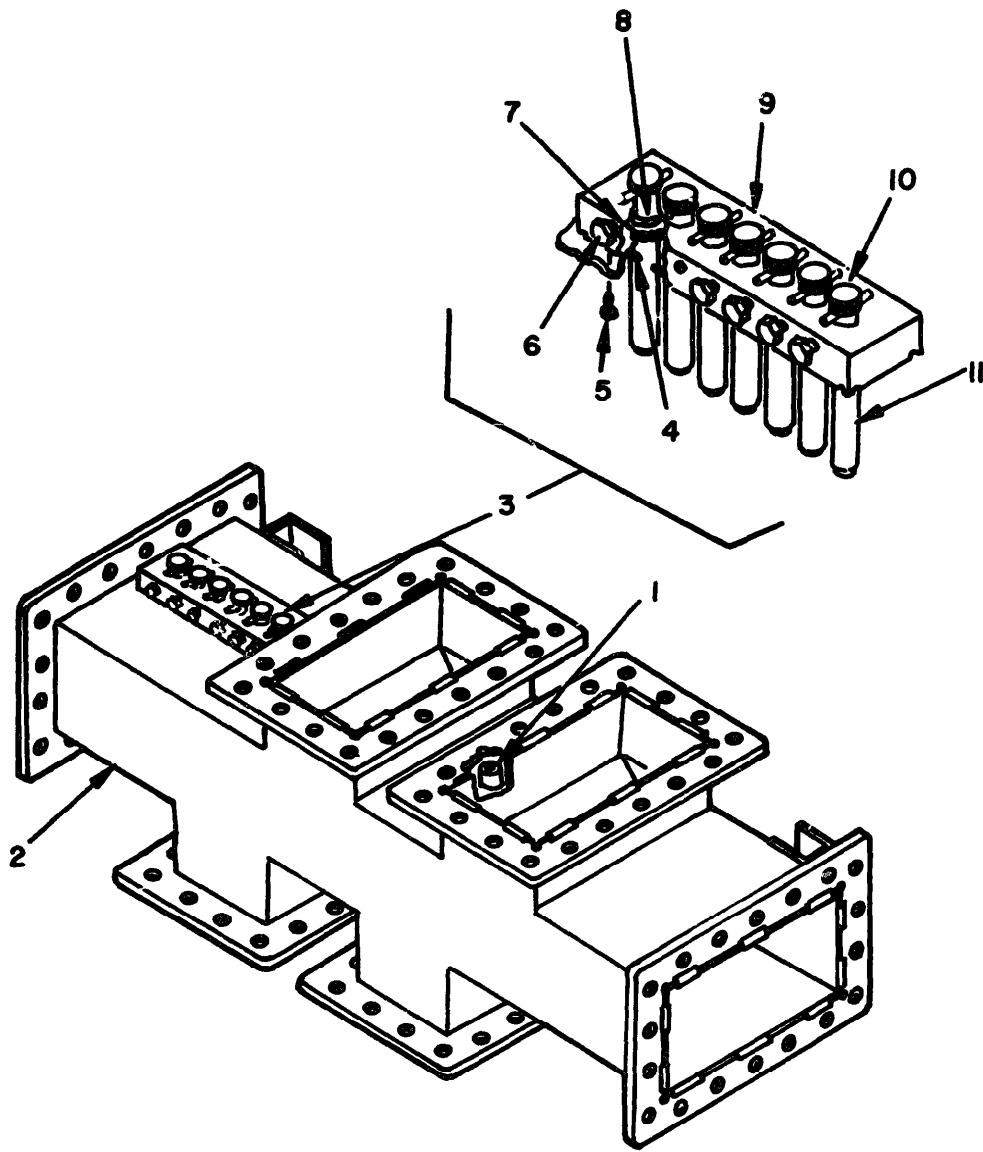
ELINU009

Figure 9. Tuning Stub Assembly for F-903/MRC-85(V).

SECTION II

TM 11-5820-746-24P

(1) ILLUSTRATION		(2) SMR CODE	(3) NATIONAL STOCK NUMBER	(4) PART NUMBER	(5) FORM	(6) DESCRIPTION	(7) U/M	(8) QTY INC IN UNIT
(a) FIG NO.	(b) ITEM NO.					USABLE ON CODE		
GROUP 0202 TUNING STUB ASSEMBLY								
9	1	XDFZZ	5310-00-616-3023	22271-3	11120	SHAFT, SHIELD	EA	8
9	2	XDFZZ		5-16 INCHES OD	11120	WASHER, NONMETALLIC	EA	8
9	3	PAFZZ	5310-00-616-3023	MS15795-212	96906	WASHER	EA	8
9	4	XDFZZ		42270-23	11120	TUBE, ALUMINUM ALLOY	EA	3
9	5	XDFZZ		MS35291-27	96906	SCREW	EA	8
9	6	XDFZZ		3225463	11120	PLUNGER ASSEMBLY, DOUBLE	EA	8
9	7	XDFZZ		2226961	11120	STUB BODY, TUNING	EA	8
9	8	XDFZZ		5-308Y1-4 INCHES	11120	SETSCREW	EA	8
9	9	XDFZZ		6L6F	96881	NYL INER	EA	16
9	10	PAFZZ	5305-00-282-7120	5100-37H	79136	RING, RETAINING	EA	40
9	11	XDFZZ		5-408Y1-4 INCHES	11120	SETSCREW	EA	13
9	12	XDFZZ		TYPES 6-32 BY 3-8 IN CHES	11120	SCREW, MACHINE	EA	56
9	13	XDFZZ	6680-00-225-6973	D114114	62869	COUNTER, ROTARY, FIXED MOUNTING	EA	8
9	14	XDFZZ		32293-1	11120	CASTING	EA	8
9	15	PAFZZ	5330-00-585-3353	MS29513-347	96906	PACKING	EA	8
9	16	PAFZZ	5330-00-252-6048	MS29513-6	96906	PACKING	EA	8
9	17	PAFZZ	5330-00-248-3831	MS29513-11	96906	PACKING	EA	8
9	18	XDFZZ		G62-96	00141	GEAR, SPUR	EA	8
9	19	XDFZZ	3020-00-269-3419	Y4848	71041	GEAR, SPUR	EA	8
9	20	PAFZZ	5315-00-841-4442	79-028-125-0750	72962	PIN, SPRING	EA	8



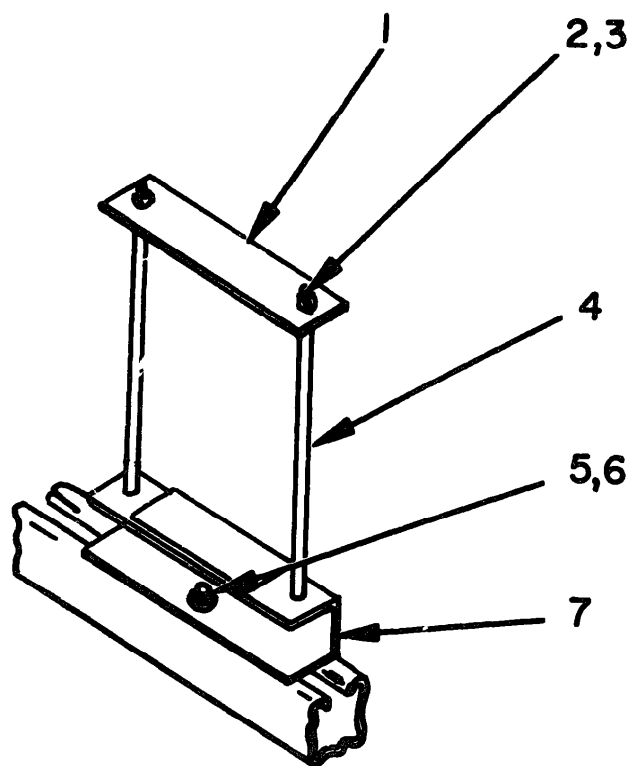
ELINUOIO

Figure 10. Filter Assembly.

SECTION II

TM 11-5820-746-24P

(1) ILLUSTRATION		(2)	(3)	(4)	(5)	(6) DESCRIPTION	(7)	(8)
(a) FIG NO.	(b) ITEM NO.	(c) QBR CODE	NATIONAL STOCK NUMBER	PART NUMBER	PCPN		UOM	QTY INC BY LIMIT
GROUP 0203 FILTER ASSEMBLY								
10	1	XDFZZ		TYPES 0-32BY3-8TH CHES	11120	SCREW, MACHINE	EA	3
10	2	XDFZZ		4229163	11120	FILTER MOUNT	EA	1
10	3	XDFZZ		3232861	11120	PROBE ASSEMBLY, TUNING, ADJUSTABLE	EA	2
10	4	XDFZZ		12326-1	11120	GASKET	EA	1
10	5	PAFZZ	5305-00-576-5810	MS35233-61	96906	SCREW	EA	30
10	6	PAFZZ	5305-00-271-8814	101	02751	SCREW, CAP, HEXAGON HEAD	EA	9
10	7	XDFZZ		97-72A	30817	RING, CONTACT	EA	9
10	8	PAFZZ	5305-00-250-0221	MS29513-210	96906	PACKING	EA	9
10	9	XDFZZ		42327-1	11120	BLOCK, ADJUSTABLE PROBE	EA	1
10	10	XDFZZ		5-2-040-187-1625	72962	PIN, STRAIGHT, HEADLESS	EA	9
10	11	XDFZZ		22256-1	11120	PROBE	EA	7



ELINUOII

Figure 11. hanger Assembly.

SECTION II

TM 11-5820-746-24P

(1) ILLUSTRATION		(2)	(3)	(4)	(5)	(6)	(7)	(8)
(a) FIG NO	(b) ITEM NO.	SMR CODE	NATIONAL STOCK NUMBER	PART NUMBER	FSCM	DESCRIPTION	USABLE ON CODE	QTY INC IN UNIT
						GROUP 03 HANGER ASSEMBLY		
11	1	XDFZZ		22507G1	11128	PLATE ASSEMBLY		EA 1
11	2	PAFZZ	5310-00-625-5756	MS15795-312	96906	WASHER		EA 8
11	3	PAFZZ	5310-00-538-7206	MS35690-510	96906	NUT		EA 4
11	4	XDFZZ		3827-4	11128	STUD,PLAIN		EA 2
11	5	XDFZZ		MS35291-34	96906	SCREW		EA 36
11	6	XDFZZ	5310-00-835-6305	P5507	96195	NUT,PLAIN,RECTANGULAR		EA 36
11	7	XDFZZ		32508G1	11128	CLAMP ASSEMBLY		EA 1

NATIONAL STOCK NUMBER AND PART NUMBER INDEX
 NOTE: LATEST NATIONAL STOCK NUMBER ASSIGNMENTS AT END OF INDEX.

STOCK NUMBER	FIGURE NO.	ITEM NO.	STOCK NUMBER	FIGURE NO.	ITEM NO.
530500-021-23740	4	2	5365-00-282-7120	9	10
5305-00-021-3740	5	2	5330-00-291-7339	5	8
5310-00-042-3759	5	12	5310-00-543-2870	4	3
6680-00-225-6973	6	13	5310-00-543-2870	5	3
6680-00-225-6973	9	13	5306-00-543-4405	5	13
6330-00-248-3831	6	17	5310-00-616-3023	6	3
5330-00-248-3831	9	17	5310-00-616-3023	9	3
5330-00-252-6048	6	16	5310-00-619-1148	7	5
5330-00-252-6048	9	16	5310-00-625-5756	5	11
5310-00-262-6255	7	7	5310-00-625-5756	11	2
3020-00-269-3419	6	19	5310-00-835-6305	11	6
3020-00-269-3419	9	19	5315-00-841-4442	6	20
5365-00-282-7120	6	10	5315-00-841-4442	9	20

PART NUMBER	FSCM	FIG. NO.	ITEM NO.	PART NUMBER	FSCM	FIG. NO.	ITEM NO.
CU1376MRC85V	80058	1	4	12520-1	11128	8	8
D114114	62869	6	13	22085-2	11128	5	10
D114114	62869	9	13	22085-3	11128	4	10
E903MRC85V	80058	1	3	22286-1	11128	10	11
G65-96	00141	6	18	22269G1	11128	6	7
G96-96	00141	9	18	22269G1	11128	9	7
KN74-01	91836	8	6	22271-1	11128	6	1
MS15795-212	96906	6	3	22271-3	11128	9	1
MS15795-212	96906	9	3	222493-1	11128	3	1
MS15795-308	96906	7	5	22507G1	11128	11	1
MS15795-312	96906	5	11	22511G1	11128	1	1
MS15795-312	96906	11	2	22515G1	11128	7	3
MS15795-314	96906	4	3	22516-1	11128	7	1
MS15795-314	96906	5	3	22518G1	11128	2	2
MS16555-627	96906	5	7	22521G1	11128	8	1
MS16555-646	96906	4	7	32084-5	11128	4	1
MS29513-11	96906	6	17	32084-5	11128	5	1
MS29513-11	96906	9	17	32117G1	11128	2	6
MS29513-210	96906	3	3	32117G1	11128	8	4
MS29513-210	96906	10	8	32117G3	11128	5	6
MS29513-328	96906	5	8	32249G1	11128	2	3
MS29513-337	96906	4	8	32249G2	11128	4	6
MS29513-347	96906	6	15	32254G3	11128	9	6
MS29513-347	96906	9	15	32254G5	11128	6	6
MS29513-5-6	96906	6	16	32293-1	11128	6	14
MS29513-6	96906	9	16	32293-1	11128	9	14
MS35233-27	96906	8	7	32328G1	11128	10	3
MS35233-61	96906	2	5	32486G1	11128	2	4
MS35233-61	96906	10	5	32508G1	11128	11	7
MS35233-64	96906	7	4	32514-1	11128	7	8
MS35291-97	96906	6	5	3827-4	11128	11	4
MS35291-97	96906	9	5	42270-23	11128	6	4
MS35291-34	96906	11	5	42270-23	11128	9	4
MS35307-34	96906	5	13	42270G1	11128	8	2
MS35307-61	96906	4	11	42291G1	11128	8	3
MS35307-64	96906	4	2	42291G3	11128	10	2
MS35338-81	96906	5	2	42327-1	11128	10	9
MS35338-81	96906	7	6	42431G2	11128	8	5
MS35338-83	96906	5	12	42476G1	11128	2	7
MS35338-84	96906	4	4	42485-1	11128	3	6
MS35338-84	96906	5	4	42496G1	11128	2	1
MS35690-510	96906	11	3	5-16INCHESOD	11128	6	2
MS35690-610	96906	4	5	5-16INCHESOD	11128	9	2
MS35690-610	96906	5	5	5-2-040-187-1625	72962	3	7
P5500	96195	1	2	5-2-040-187-1625	72962	10	10
P5507	96195	11	6	5-30BY1-4-INCHES	11128	6	8
SR318	83324	5	9	5-30BY1-4INCHES	11128	9	8
SR376	83324	4	9	5-40BY1-4INCHES	11128	6	11
TYPES8-32BY3-8INCHES	11128	6	12	5-40BY1-4INCHES	11128	9	11
TYPES8-32BY3-8INCHES	11128	9	12	5100-27H	79136	6	10
TYPES8-32BY3-8INCHES	11128	10	1	5100-27H	79136	9	10
TYPES8-32BY3-8INCHES	11128	2	8	6LF	96881	6	9
Y4848	71041	6	19	6LF	96881	9	9
Y4848	71041	9	19	79-028-125-0750	72962	6	20
Y01	02751	3	5	79-028-125-0750	72962	9	20
101	02751	10	6	79NM04	72962	7	7
12326-1	11128	10	4	97-72A	30817	3	2
12494-1	11128	3	4	97-72A	30817	10	7
12517-1	11128	7	2				

STOCK NUMBER	FIGURE NO.	ITEM NO.
5305-0-021-3732	4	11
5310-00-054-1831	7	6
5340-00-189-8716	5	9
5305-00-189-4861	8	7
5330-00-250-0221	3	3
5330-00-250-0221	10	8
5330-00-251-9638	4	8
5305-00-271-8814	3	5
5305-00-271-8814	10	6
5310-00-275-0586	4	4
5310-00-275-0586	5	4
5340-00-325-0580	4	9
5310-00-538-7206	11	3
5305-00-543-2713	7	4
5305-00-576-5810	2	5
5305-00-576-5810	10	5
5330-00-585-3353	6	15
5330-00-585-3353	9	15
5310-00-655-6457	4	5
5310-00-655-6457	5	5
5315-00-382-1733	4	7
5315-00-825-1207	5	7
5820-00-946-3055	2	1

*U.S. GOVERNMENT PRINTING OFFICE 1976-603-770-372

RECOMMENDED CHANGES TO EQUIPMENT TECHNICAL MANUALS

SOMETHING WRONG WITH THIS MANUAL?



WHEN... JOT DOWN THE DOPE ABOUT IT ON THIS FORM, TEAR IT OUT, FOLD IT AND DROP IT IN THE MAIL!

FROM: (YOUR UNIT'S COMPLETE ADDRESS)

Commander
Stateside Army Depot
ATTN: AMSTA-US
Stateside, N.J. 07703

DATE 10 July 1975

PUBLICATION NUMBER

TM 11-5840-340-12

DATE

23 Jan 74

TITLE

Radar Set AN/SPC-76

BE EXACT... PIN-POINT WHERE IT IS

IN THIS SPACE TELL WHAT IS WRONG AND WHAT SHOULD BE DONE ABOUT IT:

PAGE NO.	PARAGRAPH	FIGURE NO.	TABLE NO.
2-25	2-28		
3-10	3-3		3-1
5-6	5-8		
		FO3	

2-25 2-28

Recommend that the installation antenna alignment procedure be changed throughout to specify a 2° IFF antenna lag rather than 1°.

REASON: Experience has shown that with only a 1° lag, the antenna servo system is too sensitive to wind gusting in excess of 25 knots, and has a tendency to rapidly accelerate and decelerate as it hunts, causing strain to the drive train. Hunting is minimized by adjusting the lag to 2° without degradation of operation.

3-10 3-3

3-1 Item 5, Function column. Change "2 db" to "3db."

REASON: The adjustment procedure for the TRANS POWER FAULT indicator calls for a 3 db (500 watts) adjustment to light the TRANS POWER FAULT indicator.

5-6 5-8

Add new step f.1 to read, "Replace cover plate removed in step e.1, above."

REASON: To replace the cover plate.

FO3

Zone C 3. On J1-2, change "+24 VDC to "+5 VDC."

REASON: This is the output line of the 5 VDC power supply. + 24 VDC is the input voltage.

TYPED NAME, GRADE OR TITLE, AND TELEPHONE NUMBER

SSG I. M. DeSpirito 999-1776

SIGN HERE:

SSG I. M. DeSpirito

DA FORM 2028-2 (TEST)

1 AUG 74

P.S.--IF YOUR OUTFIT WANTS TO KNOW ABOUT YOUR MANUAL "FIND" MAKE A CARBON COPY OF THIS AND GIVE IT TO YOUR HEADQUARTERS.

HISA 1686-75

TEAR ALONG DOTTED LINE

RECOMMENDED CHANGES TO EQUIPMENT TECHNICAL MANUALS



SOMETHING WRONG WITH THIS MANUAL?

THEN... JOT DOWN THE DOPE ABOUT IT ON THIS FORM, TEAR IT OUT, FOLD IT AND DROP IT IN THE MAIL!

FROM: (YOUR UNIT'S COMPLETE ADDRESS)

DATE

PUBLICATION NUMBER

DATE

TITLE

BE EXACT... PIN-POINT WHERE IT IS

IN THIS SPACE TELL WHAT IS WRONG AND WHAT SHOULD BE DONE ABOUT IT:

PAGE NO.	PARA-GRAPH	FIGURE NO.	TABLE NO.
----------	------------	------------	-----------

TEAR ALONG DOTTED LINE

TYPED NAME, GRADE OR TITLE, AND TELEPHONE NUMBER

SIGN HERE:

DA FORM 2028-2 (TEST) 1 AUG 74

P.S.--IF YOUR OUTFIT WANTS TO KNOW ABOUT YOUR MANUAL "FIND," MAKE A CARBON COPY OF THIS AND GIVE IT TO YOUR HEADQUARTERS.

**FILL IN YOUR
UNIT'S ADDRESS**

FOLD BACK

DEPARTMENT OF THE ARMY

POSTAGE AND FEES PAID
DEPARTMENT OF THE ARMY
DDO-314

OFFICIAL BUSINESS

PENALTY FOR PRIVATE USE, \$300

Commander
US Army Electronics Command
ATTN: DRSEL-MA-Q
Fort Monmouth, New Jersey 07703

TEAR ALONG DOTTED LINE

FOLD BACK

FILL IN YOUR
UNIT'S ADDRESS

FOLD BACK

DEPARTMENT OF THE ARMY

POSTAGE AND FEES PAID
DEPARTMENT OF THE ARMY
DCC-314

OFFICIAL BUSINESS
PENALTY FOR PRIVATE USE, \$300

Commander
US Army Electronics Command
ATTN: DRSEL-MA-Q
Fort Monmouth, New Jersey 07703

FOLD BACK

TEAR ALONG DOTTED LINE

RECOMMENDED CHANGES TO EQUIPMENT TECHNICAL MANUALS



SOMETHING WRONG WITH THIS MANUAL?

THEN... JOT DOWN THE DOPE ABOUT IT ON THIS FORM, TEAR IT OUT, FOLD IT AND DROP IT IN THE MAIL!

FROM: (YOUR UNIT'S COMPLETE ADDRESS)

DATE

PUBLICATION NUMBER

DATE

TITLE

BE EXACT... PIN-POINT WHERE IT IS

IN THIS SPACE TELL WHAT IS WRONG AND WHAT SHOULD BE DONE ABOUT IT:

PAGE NO.	PARA-GRAPH	FIGURE NO.	TABLE NO.
----------	------------	------------	-----------

TEAR ALONG DOTTED LINE

TYPED NAME, GRADE OR TITLE, AND TELEPHONE NUMBER

SIGN HERE:

DA FORM 2028-2 (TEST) 1 AUG 76

P.S.--IF YOUR OUTFIT WANTS TO KNOW ABOUT YOUR MANUAL "FIND," MAKE A CARBON COPY OF THIS AND GIVE IT TO YOUR HEADQUARTERS.

FILL IN YOUR
UNIT'S ADDRESS

FOLD BACK

DEPARTMENT OF THE ARMY

POSTAGE AND FEES PAID
DEPARTMENT OF THE ARMY
DDO-314

OFFICIAL BUSINESS
PENALTY FOR PRIVATE USE, \$300

Commander
US Army Electronics Command
ATTN: DRSEL-MA-Q
Fort Monmouth, New Jersey 07703

TEAR ALONG DOTTED LINE

FOLD BACK

by Order of the Secretary of the Army:

Official:

PAUL T. SMITH
Major General, United States Army
The Adjutant General

DISTRIBUTION:

Active Army:

USASA (2)	USA Ascom Depot (3)
OS Maj Comds (2)	USA Cp Carroll Dep (2)
USACC (5)	Unit org under fol TOE:
USACC-CONUS (3)	(1 cy each unit)
USACC-EUR (3)	11-15
USACC-PAC (3)	11-45
USACC-T (10)	11-97
USACC Sig Gp, Okinawa (3)	11-98
USACC-Japan (5)	11-302
USACC Comm Op Fac, Korea (3)	11-303
USACC Sig Bde, Korea (3)	11-347
USACC Sig Gp, Taiwan (2)	11-357
LOGCOMDS (5)	11-357
8th USA (5)	11-368
Sig FLDMS (Pac) (Eur) (1)	11-377
LBAD (5)	11-500(AA-AC)
SAAD (10)	29-118
TOAD (10)	29-134
USACSA (2)	29-136
TECOM (2)	29-137
HISA (Ft Monmouth)(33)	

NG: None

USAR: None

For explanation of abbreviations used, see AR310-50

**DEPARTMENT OF THE ARMY
US ARMY AG PUBLICATIONS CENTER
1655 WOODSON ROAD
ST. LOUIS, MISSOURI 63114**
**OFFICIAL BUSINESS
PENALTY FOR PRIVATE USE \$300**

**POSTAGE AND FEES PAID
DEPARTMENT OF THE ARMY
DOD 314**



END

03-04-83

DATE



DEPARTMENT OF THE ARMY

MICROFORM
TEST TARGET

